

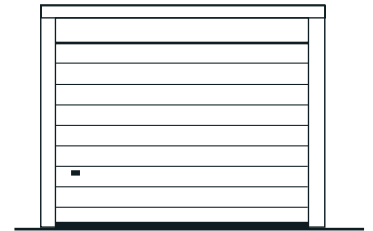
GROSSRAUM-KOMFORTGARAGE (Stahlbeton-Fertigarage) Typ GX 75/295-1

hansebeton[®]

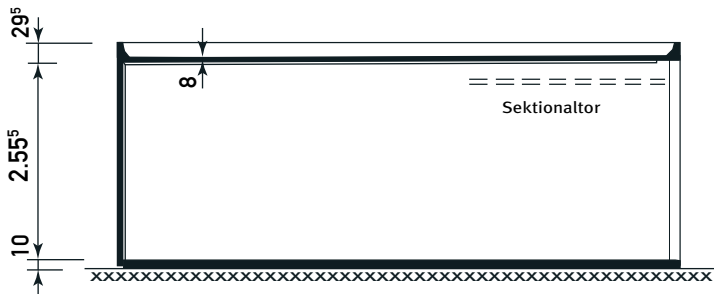
| | | | |
|---------------------------|---------------------------------|----------------|----------------------|
| Hersteller | Hansebeton GmbH & Co. KG (Syke) | Nutzfläche | 26,15 m ² |
| Zeichnungsnummer/Stand | GX75-295-1.pdf / 29.02.2016 | Bebaute Fläche | 28,20 m ² |
| Bezeichnung / Typenstatik | GX75 (H 2,95 m) / S-BT/14007 | Umbauter Raum | 83,19 m ³ |
| | | Maßstab | 1:100 |



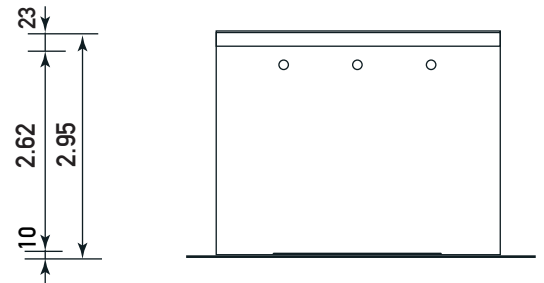
Seitenansicht



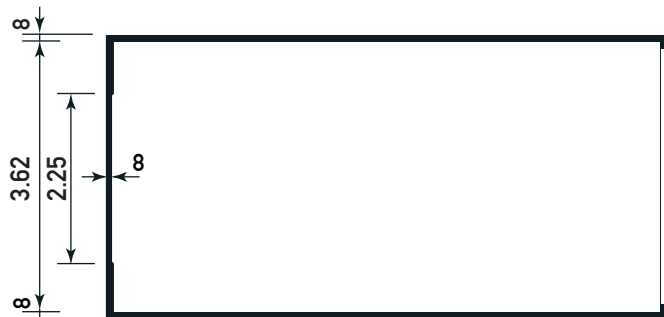
Toransicht



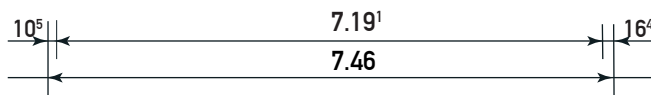
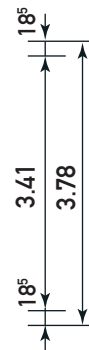
Schnitt



Rückansicht



Grundriss



Bauherr: _____

Straße: _____

Wohnort: _____

Bauort: _____

Datum: _____

Unterschrift: _____