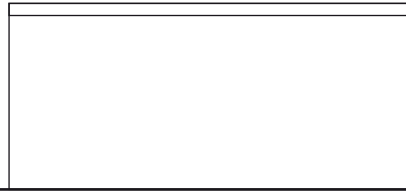


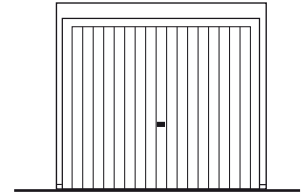
STAHLBETON-FERTIGGARAGEN Typ N 53

hansebeton

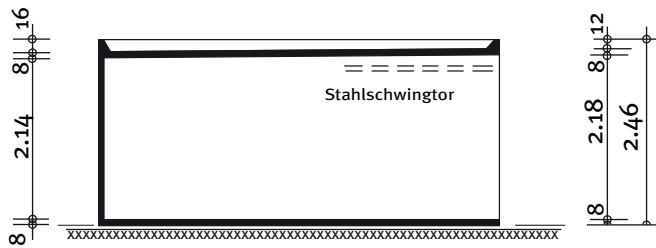
Hersteller	Baustoffwerke Syke GmbH Baustoffwerke Neetze GmbH & Co.KG	Nutzfläche	13,85 m ²
Zeichnungsnummer/Stand	N53a01.dwg / 01.07.2005	Bebaute Fläche	15,11 m ²
Bezeichnung Typenstatik	N 5,30 / 2,85 / 2,46	Umbauter Raum	37,16 m ³
		Maßstab	1:100



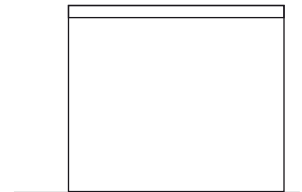
Seitenansicht



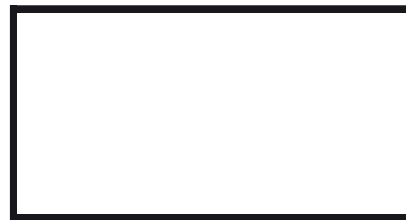
Toransicht



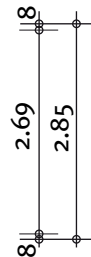
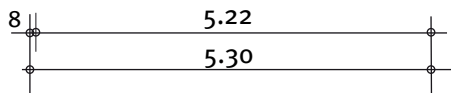
Schnitt



Rückansicht



Grundriss



Bauherr: _____

Straße: _____

Wohnort: _____

Bauort: _____

Datum: _____

Unterschrift: _____